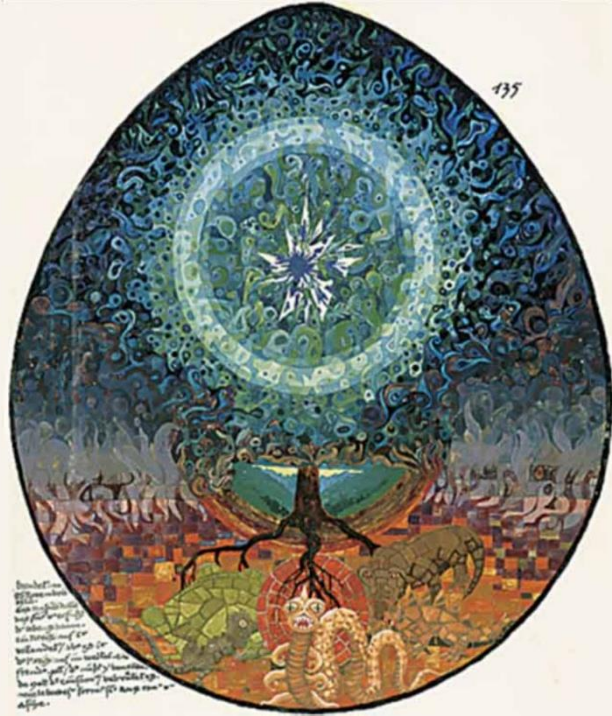




香港沙遊治療學會  
HKSTA

**Hong Kong Sandplay Therapy Association**



Set the egg before you, the God in his beginning. And behold it. And incubate it with the magical warmth of your gaze. *C.G. Jung, Red Book*

*Book*

## **The 5Ws, Part I & II**

in

## **Sandplay Therapy Training**

By

**Ruby Mui, Clin. Psy. (Psy.D)**  
**Berenice Lee, Psychotherapist (M.Couns.)**

**17 & 18 Feb 2024, Part I**  
**Sat. & Sun. from 9:30am-5:00pm**  
**3 & 10 Mar 2024, Part II**

**Experiential Sandplay Workshop (3 Mar) 9:30am-4:30pm**  
**Beach Walk Workshop (10 Mar) 10:00am-4:30pm**

**Language: Cantonese**

**For Enquiries, please contact**

**Email:** [training@hksandplay.org](mailto:training@hksandplay.org)

**Whatsapp:** 9027 9558

**Web:** [www.hksandplay.org](http://www.hksandplay.org)

**Facebook:** [hksandplay](https://www.facebook.com/hksandplay)



## Hong Kong Sandplay Therapy Association

### Course Description

This course aims to provide the practical considerations and guidelines for mental health professionals who are at the beginning stage in using sandplay therapy with clients. There will be two parts to this course: Part I is an interactive webinar workshop and Part II will be an in-person experiential workshop.

For Part I, (17 & 18 February 2024) we will answer these 5W questions:

*“What is the theoretical base and therapeutic goals of Sandplay Therapy?”*

*“What is the role of the therapist and client in Sandplay Therapy?”*

*“What are the materials used in Sandplay Therapy?”*

*“What is the process of conducting a sandplay session?”*

*“Why is it most important to understand the client’s first tray?”*

For Part II, (3 & 10 March 2024) we will get to experience firsthand the essence of sandplay therapy and answer these 5W Questions:

*“What is the relationship between active imagination and sandplay?”*

*“What is the symbolic significance of wet and dry sand through the senses?”*

*“What is a sandplay creation?”*

*“What is the difference between the sand at the beach and the sand in sandplay?”*

*“What is the most important element in sandplay therapy?”*

### **Co-ordinator and presenters:**

Ruby Mui, Psy.D, is a Clinical Psychologist at private setting. She provides psychological services for adults, family and children with special educational needs and attachment related issues. She has been using sandplay therapy in her practice since 2011.

Berenice Lee, M.Couns, Psychotherapist, offers counselling services for individuals, couples and families at private sector. She has been practicing sandplay therapy for over ten years.

**Registration Deadlines:** Early-bird deadline on 8 February 2024  
Regular deadline on 15 February 2024

**Course Fees:**

**Fees for workshop 17 & 18 Feb, 3 & 10 Mar 2024 Parts I & II together**

HKSTA member	HK\$2,600 (Regular)	HK\$2,300 (early bird on or before 8 Feb, 2024)
Nonmember	HK\$2,700 (Regular)	HK\$2,500(early bird on or before 8 Feb, 2024)

**Fees for workshop on 17 & 18 Feb 2024 Part I**

HKSTA member	HK\$1,400 (Regular)	HK\$1,250 (early bird on or before 8 Feb, 2024)
Nonmember	HK\$1,500 (Regular)	HK\$1,350 (early bird on or before 8 Feb, 2024)

**Fees for workshop on 3 & 10 Mar 2024 Part II**

HKSTA member	HK\$1,400 (Regular)	HK\$1,250 (early bird on or before 8 Feb, 2024)
Nonmember	HK\$1,500 (Regular)	HK\$1,350 (early bird on or before 8 Feb, 2024)

Please register at: [5Ws in Sandplay Therapy Training 2024](#) and upload your payment slip as well.

Account of Hong Kong Sandplay Therapy Association: Hang Seng Bank 228-338430-001.